

Choice Fresh Bone-in Beef Export Rib 2” 16/up

Product Description - 100% Fresh Beef, No Additives

Product Code - 75054

GTIN - 90096423750540

Master Case

Piece Count	Net Weight	Gross Weight
3	52	54.73
Width	Length	Height
15.63"	23.38"	9.75"
TI	HI	Cube
5	5	2.06 cubic ft

Storage

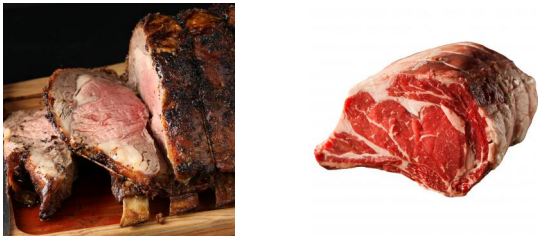
Shelf Life	Storage Temp	Storage Method
28 days from production	Storage Handling: 28°F-34°F	Keep Refrigerated

Preparation

Cook Thoroughly To 160°F

Ingredients

Beef



Nutrition Facts

Serving Size – 4 oz

Calories 190

Calories from Fat 90

Total Fat 10g	15%
Saturated Fat 4g	20%
Trans Fat 0g	
Cholesterol 75mg	25%
Sodium 75mg	3%
Total Carbs 0g	0%
Dietary Fiber 0g	0%
Sugars 0g	
Protein 24g	

Vitamin A 0%	Calcium 2%
Vitamin C 0%	Iron 10%

*The % Daily Value tells you how much a nutrient in a serving of food contributes to a daily diet. 2,000 calories a day is used for general nutrition advice.