



# Chuck Roll 1" Neck Off Select

**Product Description** - The America's Heartland Boneless Beef Chuck Roll is 100% Select Grade beef and contains no additives.

## Features & Benefits

- Yield varies
- Cook thoroughly to 160°F
- Keep refrigerated
- Best if used within 35 days from the date of production

Product Code - 1037326

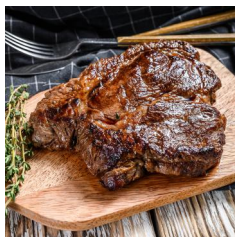
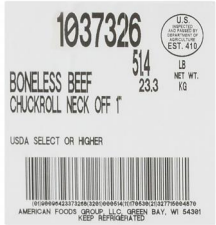
GTIN - 90096423373268

## Master Case

Case Quantity	Net Weight	Gross Weight
1	55	57
Width	Length	Height
15.63	23.38	9.75
TI	HI	Cube
5	6	2.06 cubic ft

## Storage

Shelf Life	Storage Temp	Storage Method
35 days from production	Storage Handling: 28°F - 34°F	Keep Refrigerated



## Nutrition Facts

Serving Size – 3.5 oz

Calories 220

Calories from Fat 60

Total Fat 16g	21%
Saturated Fat 7g	35%
Trans Fat 1g	
Cholesterol 70mg	23%
Sodium 70mg	3%
Total Carbs 0g	
Dietary Fiber 0g	
Sugars 0g	
Protein 19g	

Iron 10%

\*The % Daily Value tells you how much a nutrient in a serving of food contributes to a

## Ingredients

Beef

## Additional Description

America's Heartland Fresh Boneless Beef Chuckroll Neck Off, Select Grade, 3 Bags Per 55 Pound Average Weight Master Case, 1 Chuckroll Per Bag

daily diet. 2,000 calories a day is used for  
general nutrition advice.