



Export Rib 2" 16/Up Select

Product Description - The America's Heartland Bone In Beef Export Rib is 100% Select Grade beef and contains no additives.

Features & Benefits

- Yield varies
- Cook thoroughly to 160°F
- Keep refrigerated
- Best if used within 28 days from the date of production
- Store refrigerated at temperatures from 28 to 34 F

Product Code - 1037650

GTIN - 90096423376504

Master Case

Case Quantity	Net Weight	Gross Weight
1	51	53
Width	Length	Height
15.63	23.38	9.75
TI	HI	Cube
5	6	2.06 cubic ft

Storage

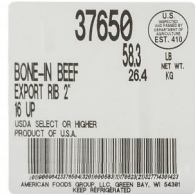
Shelf Life	Storage Temp	Storage Method
28 days from production	Storage Handling: 28°F - 34°F	Keep Refrigerated

Ingredients

Beef

Additional Description

America's Heartland Fresh Bone-In Beef Export Rib, Select Grade, 3 Bags Per 51 Pound Average Weight Master Case, 1 Export Rib Per Bag



Nutrition Facts

Serving Size – 3.5 oz

Calories 280

Calories from Fat 90

Total Fat 18g	23%
Saturated Fat 7g	35%
Trans Fat 0g	
Cholesterol 105mg	35%
Sodium 60mg	3%
Total Carbs 0g	
Dietary Fiber 0g	
Sugars 0g	
Protein 27g	

Calcium 2%

Iron 10%

*The % Daily Value tells you how much a nutrient in a serving of food contributes to a

daily diet. 2,000 calories a day is used for
general nutrition advice.