



LONG PRAIRIE PACKING CO. Eye Round Utility

Product Description - The Long Prairie Packing Boneless Beef Eye Round is 100% Utility Grade beef and contains no additives.

Features & Benefits

- Yield varies
- Cook thoroughly to 160°F
- Keep refrigerated
- Best if used within 35 days from the date of production

Product Code - 1002650

GTIN - 90096423026508

Master Case

Case Quantity	Net Weight	Gross Weight
1	63	65
Width	Length	Height
15.63	23.38	9.75
TI	HI	Cube
5	6	2.06 cubic ft

Storage

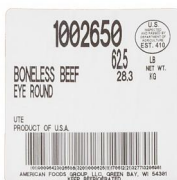
Shelf Life	Storage Temp	Storage Method
35 days from production	Storage Handling: 28°F - 34°F	Keep Refrigerated

Ingredients

Beef

Additional Description

Long Prairie Packing Fresh Boneless Beef Eye Round, Utility Grade, 12 Bags Per 63 Pound Average Weight Master Case, 1 Eye Round Per Bag



Nutrition Facts

Serving Size – 3.5 oz

Calories 130

Calories from Fat 81

Total Fat 3.5g	4%
Saturated Fat 1.5g	8%
Trans Fat 0g	
Cholesterol 60mg	20%
Sodium 50mg	2%
Total Carbs 0g	
Dietary Fiber 0g	
Sugars 0g	
Protein 23g	

Calcium 1%

Iron 8%

*The % Daily Value tells you how much a nutrient in a serving of food contributes to a

daily diet. 2,000 calories a day is used for
general nutrition advice.